

<b>mothercare</b> mothercare design studio mothercare s.r.l. viale della libertà 10 40138 BOLOGNA tel. +39 051 262202 the.m.c. s.p.a. s.p.a.	<b>job number</b> 1201	<b>colours</b> ■	<b>approval</b>	<b>date</b>	<b>signature</b>
	<b>date</b> 01/2019		<b>buyer</b>		
<b>product</b> luxury vibrating rocker lux chair	<b>job dimensions</b> 100x60x100cm	<b>mothercare</b> <b>ATC</b>	<b>technologist</b>		
<b>buyer</b>	<b>supplier</b>		<b>design</b>		



The House at Park Corner  
© Disney. Based on the "House the Park" - owned  
by A.B. Nicol and U.K. Deppard.



## luxury vibrating rocker user guide

دليل المستخدم

Guide d'utilisation

Gebrauchsanleitung

Οδηγός χρήστη

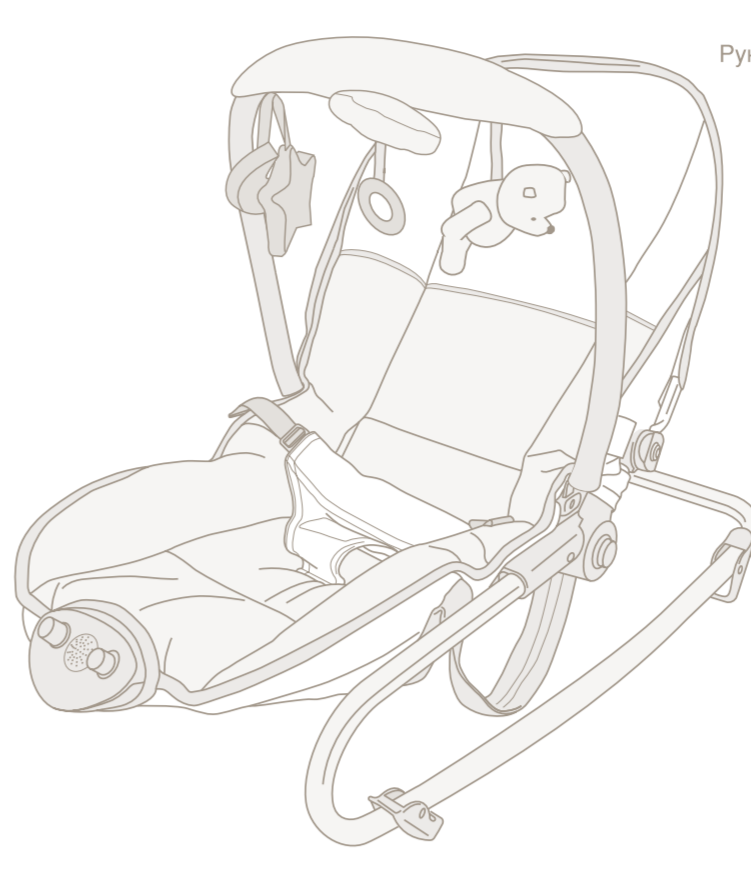
用戶指南

Instrukcja użytkowania

Руководство пользователя

Guida dell'utente

Kullanım Kılavuzu



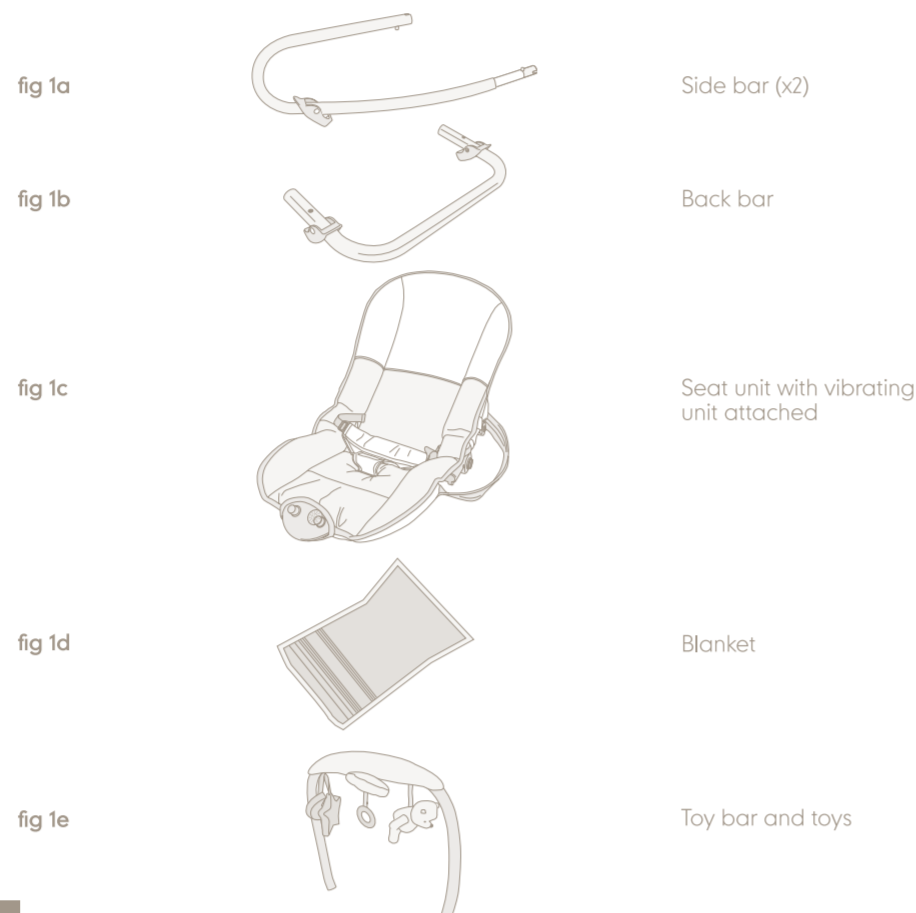
**WARNING - IMPORTANT! KEEP FOR FUTURE REFERENCE**

### introduction

This rocking cradle is suitable for children from birth and until the child can sit up unaided (6 months approximately, unit 9kg).

This product features a reclining backrest, blanket, insert cushion / play mat, vibration unit and hanging toys.

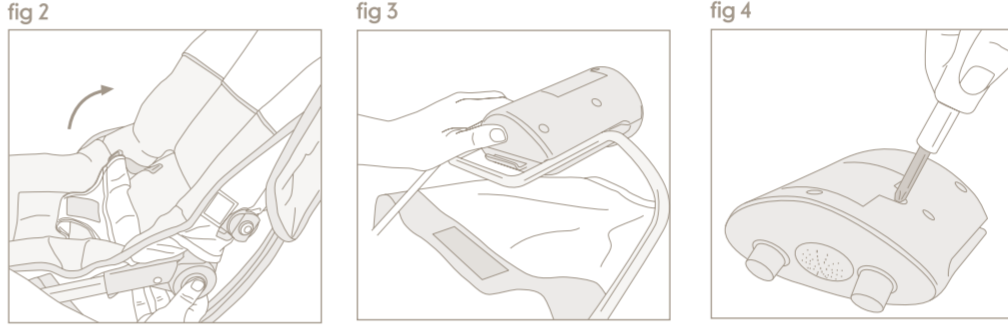
### parts checklist



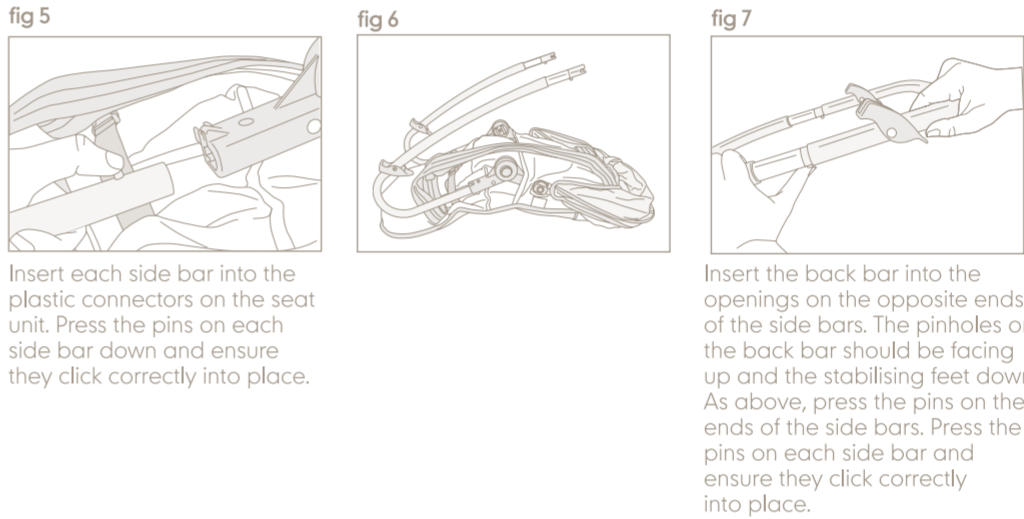
### preparation for use

#### inserting batteries into the vibrating unit

The rocking cradle comes with a vibrating unit. It may be easier to insert batteries into the unit before you fully assemble the product. Batteries are not included with the product.



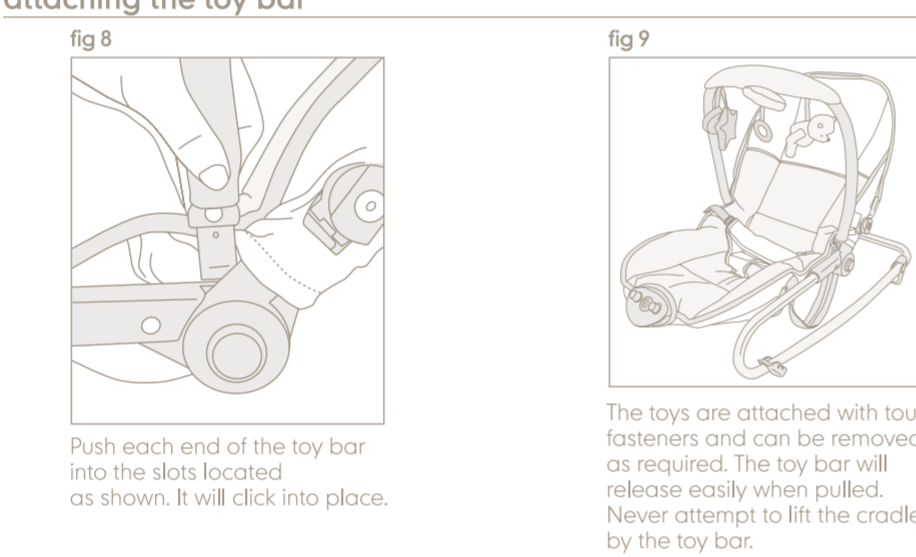
#### assembling the rocker



**NOTE:** If you find the pins hard to push in, press them down by using a flat implement, for example the handle of a spoon.

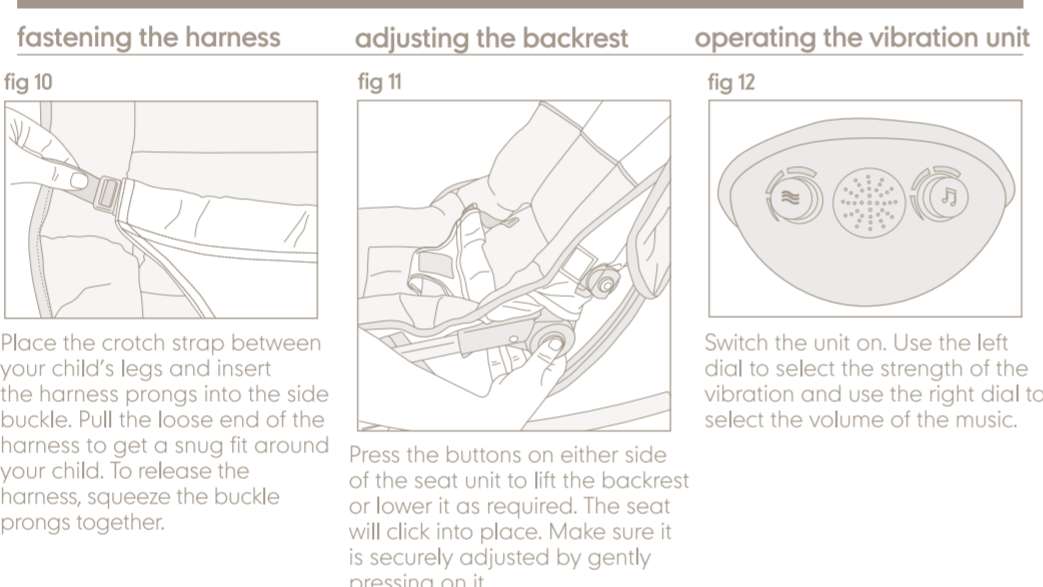
### preparation for use

#### attaching the toy bar



### in use

#### fastening the harness adjusting the backrest operating the vibration unit

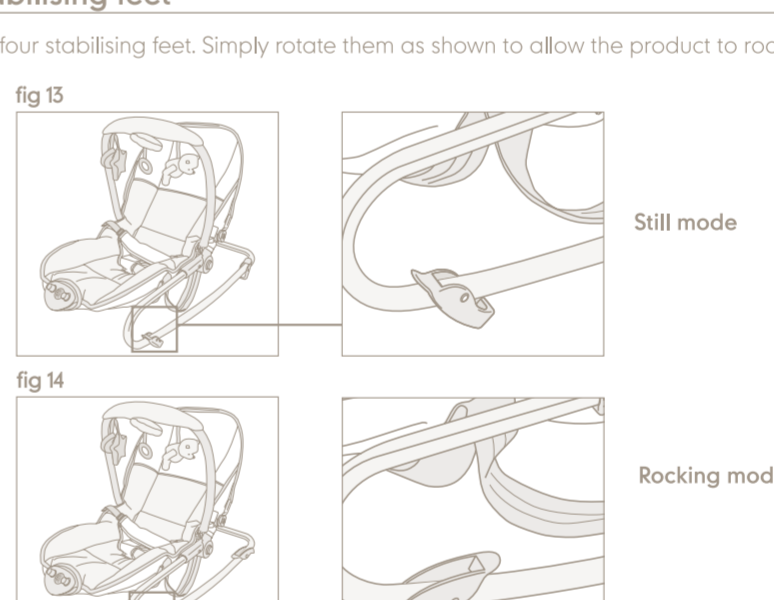


**NOTE:** Please check batteries regularly. If the vibration and sound module does not function correctly, please replace the batteries.

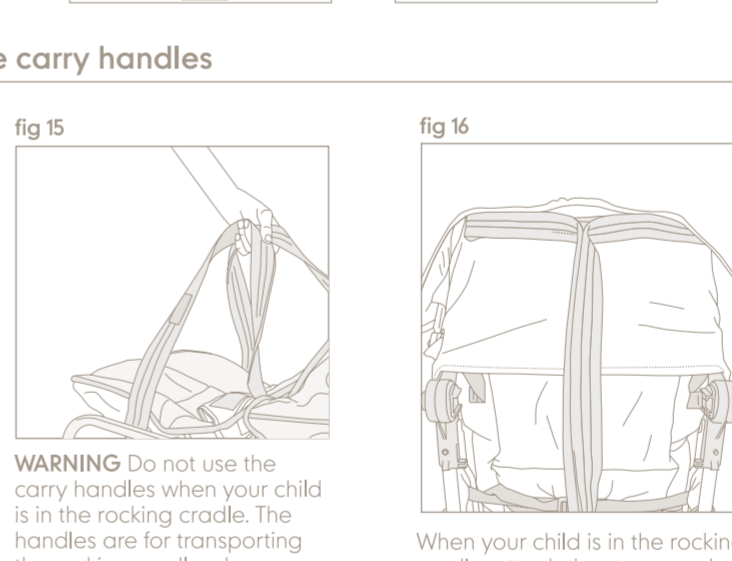
### in use

#### using the stabilising feet

On the base are four stabilising feet. Simply rotate them as shown to allow the product to rock.

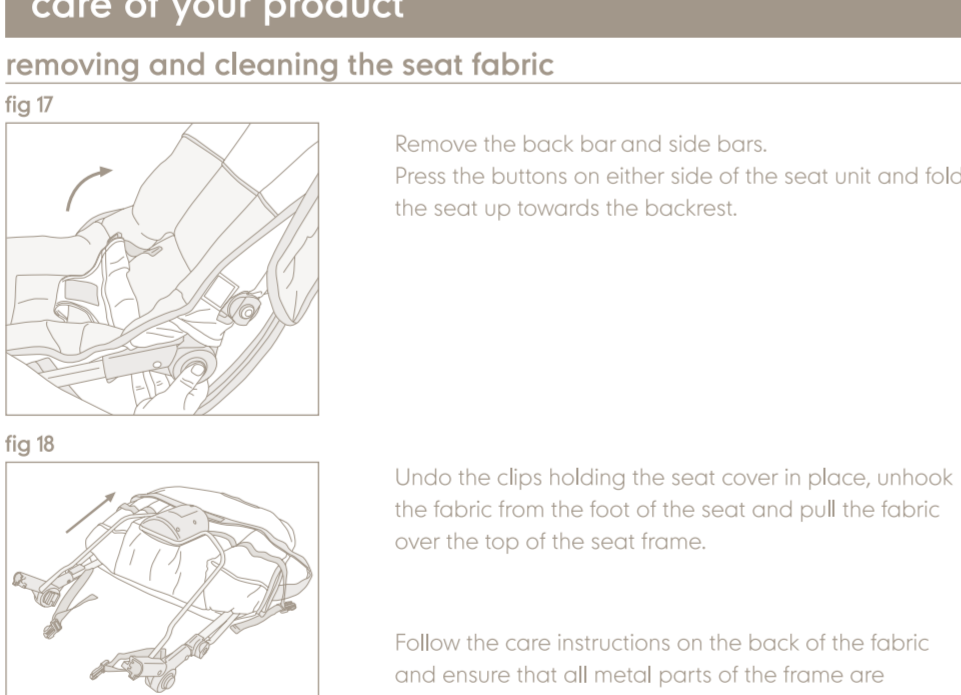


#### using the carry handles



### care of your product

#### removing and cleaning the seat fabric



#### additional care information

- Ensure the frame is correctly re-assembled before use, by following these instructions.
- Regularly check that the frame remains securely assembled and that the fabric and stitching aren't damaged.

### safety

- Conforms to EN 12191:2002
- WARNING -** Not recommended for children who can sit up by themselves (6 months approximately, unit 9kg).
- WARNING -** Never leave the child unattended in the reclined cradle.
- WARNING -** It is dangerous to put this reclined cradle on an elevated surface.
- Warning -** Never leave a child unattended in the rocker.
- Warning -** It is dangerous to put this rocker on an elevated surface, such as a worktop or bed.
- Do not use near an open fire or any other kind of heater.
- Keep children away from the cradle during set-up and when not in use.
- Never use as a child restraint in a vehicle.
- Never pick the cradle up with the baby in it.
- Do not use near stairs or steps.
- Always use the restraints system, ensuring it is correctly adjusted at all times.
- Regularly check for loose or damaged parts and discontinue use should parts become damaged or broken.
- Do not use replacement parts or accessories other than those approved by Mothercare as they may make the reclined cradle cradle unsafe.
- Battery removal and replacement must be carried out by an adult.
- Batteries should be inserted with the correct polarity, observing (+) and (-) marks on the batteries and product.
- Only use batteries of the same or equivalent type to those recommended.
- Avoid short-circuiting the terminals in the battery compartment, or the battery terminals.
- Do not mix old (used) and new batteries, or batteries of different types (e.g. alkaline and rechargeable).
- Remove exhausted batteries from toys. Battery leakage and corrosion can damage this toy.
- Remove the batteries if storing product for long periods of non-use.
- Dispose of exhausted batteries safely and never dispose of batteries in a fire.
- Never attempt to recharge non-rechargeable batteries.
- Always remove rechargeable batteries before being charged. Removal and recharging of rechargeable batteries must be carried out by an adult.